

APPENDIX

2

Customizing SAS/ASSIST Software

<i>Introduction</i>	241
<i>Setting User Profile Options</i>	241
<i>Creating an Alternate Menu Bar</i>	243

Introduction

This appendix describes how you can customize your SAS/ASSIST sessions. The main method for customizing aspects of your SAS/ASSIST environment is by manipulating the User Profile options as described in the following section. This appendix also describes how to create an alternate menu bar.

Setting User Profile Options

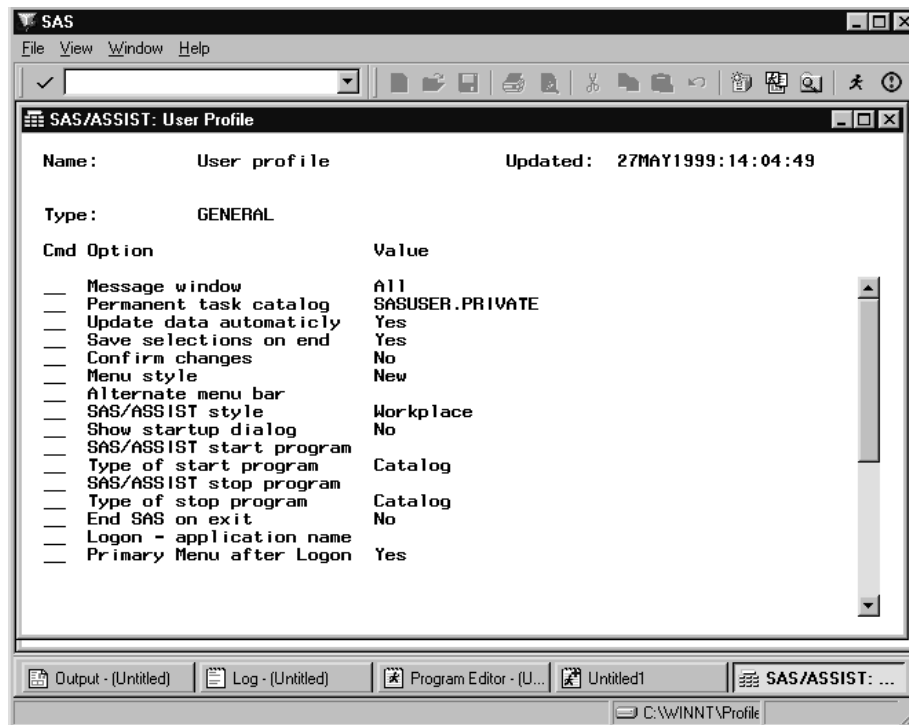
The User Profile window contains a set of options that is available for your personal use in SAS/ASSIST software. The user profile is automatically created the first time you access SAS/ASSIST software. Individual User Profiles are stored in the SAS catalog entry SASUSER.PROFILE.PASSIST.SLIST. You can use SAS/ASSIST software with the personal User Profile and the personal Query Manager that are set up for you by default. See “Selecting a Query Manager” on page 160 for more information about Query Managers.

To open the User Profile window, follow this selection path:

Tasks ► Setup ► Profiles ► User

The following display shows the User Profile window.

Display A2.1 User Profile Window



The User Profile window contains all of the possible profile options. However, it displays only a subset of the available options when the **Type** field has any value other than **All**. The default value for the **Type** field is **General**.

To see other subsets of options, type a ? in the **Type** field, press ENTER, and select a type from the list. Alternatively, you can enter a different type in the **Type** field. The types of options include the following:

All

Displays all possible options

Access to DB2 data

Displays options related to DB2 access in Query and Reporting (OS/390 only).

Access to SAS data

Displays options related to SAS data access.

Batch

Displays options related to batch processing (OS/390 only).

General

Displays general SAS/ASSIST software options.

HTML

Displays options related to HTML output.

Private menu

Displays options related to the private menu.

Query

Displays options related to Query and Reporting.

Query Manager

Displays options related to Query Managers.

Report Engine

Displays options related to the Report Engine.

Scroll the window forward as needed to see additional options. Most options have a default value. Type a ? in the **value** field for an option to list all of the possible values for that option. To change the value, select a new value from the list or type over the current value. You can also type **I** or **S** in the **Cmd** field to open the Option Information window and update values in that window. The following table lists the commands you can use in the **Cmd** field next to an option.

Table A2.1 Commands for the User Profile Window

Cmd	Action	Description
?	Lists commands	Displays a list of commands for the Cmd field.
I	Information	Opens the Option Information window, which provides information about the current option, including a description, a value, and the date altered. You can edit the value in this window by typing a new value in the Value field. Alternatively, you can type a ? in the Value field to list all possible values for the option. Select a value from the list.
R	Resets value	Returns the option to the last saved option value.
S	Information	Is identical to the I command.

The User profile is controlled by a Master profile, if one exists, and may also be controlled by a Group profile. User profile options might be restricted by an administrator. When options are restricted, you cannot change the values for these options in your User profile. (If option values have been changed in a Master or Group profile, you may see a prompt indicating that changes have been made when you invoke SAS/ASSIST software.) Master and Group Profiles are usually set up by system administrators.

Creating an Alternate Menu Bar

You can use the PMENU procedure to create an alternate menu bar for your SAS/ASSIST session. For example, submitting the following SAS program in the Program Editor window creates a menu bar called CUSTMENU in a catalog called SASUSER.MENUS:

```

proc pmenu cat=sasuser.menus;
  menu custmenu;
  item 'File' menu=file;
  item 'Locals' menu=locals;

  menu file;
  item 'End';
  item 'Bye';

  menu locals;
  item 'RESULTMAN';
  item 'ACCESS';

run;

```

```
quit;
```

After you have submitted this program, invoke SAS/ASSIST software if it is not already running. Open the User Profile window as described earlier in this chapter. Change the following options:

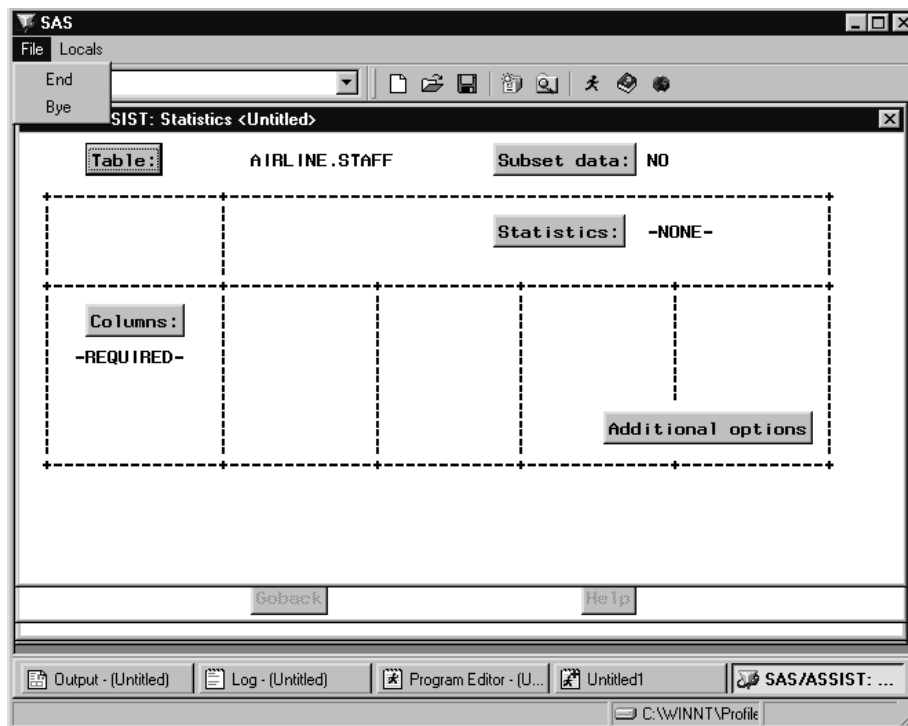
- Change the **Menu style** value to **ALTERNATE**.
- Change the **Alternate menu bar** value to the location of the alternate menu bar; in this example,

```
SASUSER.MENUS.CUSTOMENU.PMENU
```

- Change the **SAS/ASSIST Style** value to **Block menu**

Select **Close** from the **File** menu to save your changes. Exit SAS/ASSIST software, then re-invoke it. When you open a task window, your alternate menu bar appears as shown in the following display.

Display A2.2 Alternate Menu Bar



To find the SAS/ASSIST commands that you can use when building an alternate menu, follow this selection path from the **WorkPlace** menu:

Help ► **Using This Window**

Select **Menu Bar** from the **Help** window for a list of menu bar items; select a menu bar item to find its associated command. Here are some additional useful commands:

COMMAND

toggles between the menu bar and the **Command ==>** prompt.

PREVWIND

raises the previous window.

NEXT

raises the next window.

POPCMD

lists the available commands for that window.

EXPORT

opens the Export Data to External File window after a query has been run. Used in the Query window only.

END ALL

closes all open Query and Reporting windows. Used in Query and Reporting windows only.

For more information on the PMENU procedure, refer to the *SAS Procedures Guide*.

The correct bibliographic citation for this manual is as follows: SAS Institute Inc., *Doing More With SAS/ASSIST Software, Version 8*, Cary, NC: SAS Institute Inc., 1999. pp. 282.

Doing More With SAS/ASSIST Software, Version 8

Copyright © 1999 by SAS Institute Inc., Cary, NC, USA.

ISBN 1-58025-520-5

All rights reserved. Printed in the United States of America. No part of this publication may be reproduced, stored in a retrieval system, or transmitted, in any form or by any means, electronic, mechanical, photocopying, or otherwise, without the prior written permission of the publisher, SAS Institute Inc.

U.S. Government Restricted Rights Notice. Use, duplication, or disclosure of the software by the government is subject to restrictions as set forth in FAR 52.227-19 Commercial Computer Software-Restricted Rights (June 1987).

SAS Institute Inc., SAS Campus Drive, Cary, North Carolina 27513.

1st printing, October 1999

SAS® and all other SAS Institute Inc. product or service names are registered trademarks or trademarks of SAS Institute Inc. in the USA and other countries.® indicates USA registration.

Other brand and product names are registered trademarks or trademarks of their respective companies.

The Institute is a private company devoted to the support and further development of its software and related services.