

CHAPTER

12

Doing More with Setup

<i>Introduction</i>	219
<i>File Management Items</i>	220
<i>SAS data libraries</i>	220
<i>Assign maps</i>	221
<i>Assign format libref</i>	221
<i>External files</i>	221
<i>Sort a table</i>	221
<i>Sample tables</i>	221
<i>Environment Items</i>	221
<i>Primary and Secondary menu colors</i>	221
<i>Forms management</i>	221
<i>Graphics options</i>	222
<i>Enter host command</i>	222
<i>Batch processing</i>	222
<i>Use SAS program editor</i>	222
<i>Catalogs for results</i>	222
<i>Catalog search path</i>	222
<i>Private/public applications</i>	222
<i>Logon/logoff exits</i>	223
<i>History file</i>	223
<i>Information items</i>	223
<i>Browse catalog contents</i>	223
<i>Review function keys</i>	223
<i>SAS System help</i>	223
<i>Profiles items</i>	223
<i>User</i>	223
<i>Master/group</i>	223
<i>Using the Catalog Search Path</i>	224
<i>Using Logon and Logoff Exits and an Alternate Main Menu</i>	225
<i>Specifying a Logon Application</i>	225
<i>Specifying a Logoff Application</i>	226
<i>Specifying an Alternate Main Menu</i>	226

Introduction

This chapter describes in detail the setup options in SAS/ASSIST software. There are two sets of setup options associated with SAS/ASSIST software: the main setup options and the Query and Reporting setup options. The Query and Reporting setup options are discussed in “Query and Reporting Setup Options” on page 202.

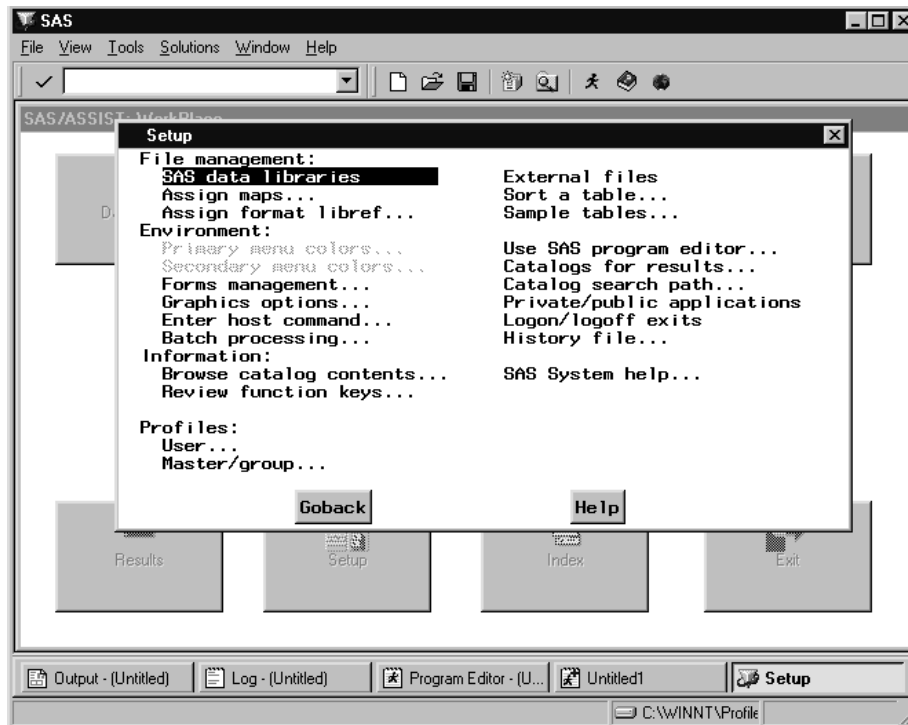
There are three ways of accessing the main SAS/ASSIST setup options: The **Setup** button on the WorkPlace menu or by following either of these selection paths:

Tasks ► Setup

Tools ► Setup

The first selection path presents the options in a cascading menu. The second selection path opens the Setup window, containing all the setup options, as shown in the following display.

Display 12.1 Setup Window



This chapter describes how to use **Setup** to create a new library, delete and create the sample SAS/ASSIST tables, use the SAS windowing environment in SAS/ASSIST software, change the catalog search path, and use logon and logoff exits and an alternate main menu.

File Management Items

SAS data libraries

The **SAS data libraries** setup item enables you to assign, list, and de-assign librefs. For more information, see the “Setting Up SAS Files” chapter in *Getting Started with the SAS System Using SAS/ASSIST Software*.

Assign maps

The **Assign maps** setup item opens the Map Data Set Libref window, enabling you to assign the MAPS libref to a SAS data library of your choosing. The Maps task searches this library for SAS/GRAPH map tables to generate map reports.

Assign format libref

The **Assign format libref** setup item opens the Assign Libref window, which enables you to assign the LIBRARY libref to a SAS data library of your choosing. The SAS System searches this library for permanently-stored user-defined formats. For more information on defining and storing formats, refer to “Creating a Format” on page 28 and “The FORMAT Procedure in *SAS Procedures Guide*.”

External files

The **External files** setup item enables you to assign, list, and de-assign filerefs, and to browse external files. For more information, see “Browsing an External File” on page 152. **External files** is also described in Appendix 3, “Batch Processing with the Result Manager (OS/390 Only),” on page 247.

Sort a table

The **Sort a table** setup item opens the SAS/ASSIST Sort a Table window. For more information on the Sort a Table window, see the “Sorting Data” chapter in *Getting Started with the SAS System Using SAS/ASSIST Software*.

Sample tables

The **Sample tables** setup item enables you to create, delete, edit, and browse the SAS/ASSIST sample tables. For more information, see the “Using the SAS System and SAS/ASSIST Software” chapter in *Getting Started with the SAS System Using SAS/ASSIST Software*.

Environment Items

Primary and Secondary menu colors

The **Primary menu colors** and **Secondary menu colors** items enable you to customize the color scheme of the Version 6 block-style SAS/ASSIST menus. They have no effect on the WorkPlace menu.

Forms management

The **Forms management** setup item enables you to create and edit printer forms and select the catalog for storing and retrieving saved printer forms. Printer forms

determine how hardcopy output appears. For more information on how printer forms are used, refer to the SAS companion documentation for your operating environment. To create or edit a printer form, type the name of the form in the **Form name** field and press ENTER. See the online help for information on the various forms windows.

Graphics options

The **Graphics options** setup item enables you to select and customize graphics device drivers for display, hardcopy, and file output. You can also specify other graphics options such as font style, size, and color. **Graphics Options** is also used in “Changing the Background Color for Graphs” on page 117.

Enter host command

The **Enter host command** setup item enables you to send a command to your operating environment without exiting your SAS session.

Batch processing

The **Batch processing** setup item enables you to set up files and commands for batch processing. For more information, see Appendix 3, “Batch Processing with the Result Manager (OS/390 Only),” on page 247.

Use SAS program editor

The **Use SAS program editor** item raises the Program Editor window. This option has the same effect as selecting **Program Editor** from the **View** menu.

Catalogs for results

The **Catalogs for results** item is used with the Version 6.06 interface style of SAS/ASSIST software (User Profile option **SAS/ASSIST Style** set to **Block, Menu style** set to **old**). In the Version 6.06 interface, you can use **Catalogs for Results** to specify a separate catalog for saved tasks, output and logs, graphics and forms. All results are now saved to the SASUSER.PRIVATE catalog by default.

Catalog search path

The **Catalog search path** item enables you to specify up to four catalogs in which to search for catalog entries before searching the default catalogs. For more information, see “Using the Catalog Search Path” on page 224.

Private/public applications

The **Private/public applications** item is used to specify what applications are run from the **Run public applications** and **Run private applications** items on the EIS task menu

Logon/logoff exits

Logon and logoff exits are programs that run automatically when you invoke and exit SAS/ASSIST software. You can also set up an alternate main menu. For more information, see “Using Logon and Logoff Exits and an Alternate Main Menu” on page 225.

History file

The **History File** item is used in the Release 6.06 SAS/ASSIST interface to collect the source code from the SAS/ASSIST tasks into one file. While this function can still be used in later releases, using a script file is generally more useful. For more information on script files, see “Creating and Executing a Script File” on page 154.

Information items

Browse catalog contents

The **Browse catalog contents** item enables you to browse the contents of a catalog of your choosing. For more information, see “Browsing an External File” on page 152.

Review function keys

The **Review function keys** item opens the KEYS window. For more information, refer to the “Using the SAS System and SAS/ASSIST Software” chapter in *Getting Started with the SAS System Using SAS/ASSIST Software*.

SAS System help

The **SAS System help** setup item invokes the SAS online help system.

Profiles items

User

The **user** item opens the User Profile window. For more information, see Appendix 2, “Customizing SAS/ASSIST Software,” on page 241.

Master/group

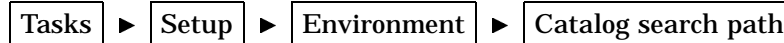
The **Master/group** item opens the Master/Group Profile window. Master and Group Profiles are used to set SAS/ASSIST software options for entire sites or groups within sites. Master and Group Profiles are usually set up by system administrators.

Using the Catalog Search Path

If you have programs, FRAME entries, or other SAS/AF catalog entries that you want SAS/ASSIST software to use, you can use the **catalog search path** item to specify the names of the catalogs you want SAS/ASSIST software to search. SAS/ASSIST software searches the specified catalogs first whenever it is called on to run a SAS/AF program, FRAME entry, or other catalog entries. If SAS/ASSIST software does not find the requested entry, SAS/ASSIST software then searches its default catalogs.

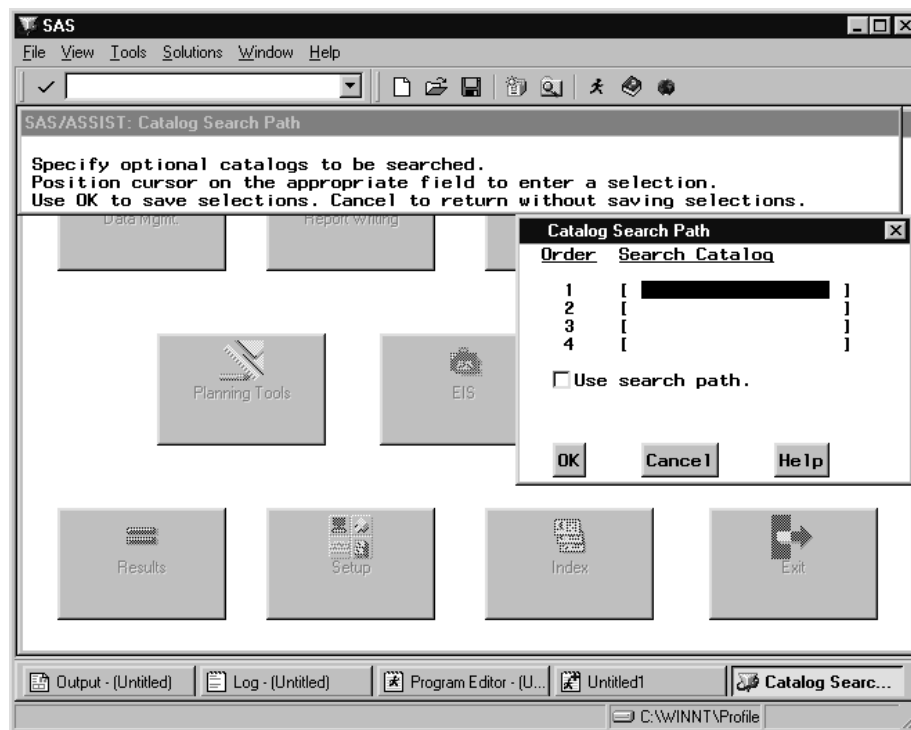
Use the following instructions to set up a catalog search path.

- 1 Follow this selection path:



The Catalog Search Path window appears.

Display 12.2 Catalog Search Path Window



- 2 In the numbered fields, type the names of the catalogs that you want SAS/ASSIST software to search first for programs, FRAME entries, and other catalog entries, before searching the default catalogs. Use two-level catalog names in the form of *libref.catalog*. SAS/ASSIST software searches the catalogs you indicate in the order you type them (from the top down). To display a list of available catalogs, type ? in the first position of the catalog field and press ENTER. Select the catalog you want to use.
- 3 To enable the search path, select **Use search path**. This feature allows you to turn the search path on and off without having to retype the catalogs each time.
- 4 Select **OK**.

Using Logon and Logoff Exits and an Alternate Main Menu

When you access SAS/ASSIST software, you can use the **Logon exit** item to specify an application that you want to initiate when you enter SAS/ASSIST software. Additionally, by using **Alternate main menu**, you can specify that you want to display an alternate menu instead of, or in addition to, the WorkPlace menu or the Version 6 block-style menu. When you exit SAS/ASSIST software, you can specify an application you want to invoke upon exiting by using **Logoff exit**.

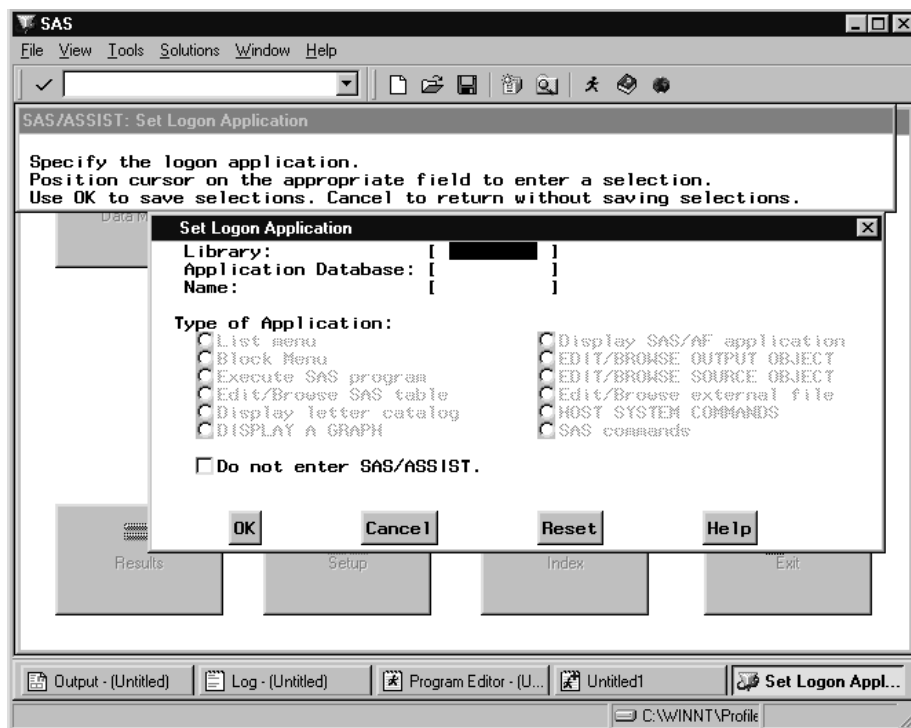
This section discusses the use of **Logon/logoff exits**, including using **Alternate main menu**. As an alternative to using these windows, you can set the **SAS/ASSIST start program**, **Type of start program**, **SAS/ASSIST stop program**, and **Type of stop program** User Profile options. See “Setting User Profile Options” on page 241.

Specifying a Logon Application

- 1 To display the Set Logon Application window, follow this selection path:

Tasks ► Setup ► Logon/logoff exits ► Logon Exit

Display 12.3 Set Logon Application Window



- 2 In the **Library** field, type the name of the library that contains the applications database, for example, SASUSER.
- 3 In the **Applications Database** field, specify the applications database that contains the desired application. The applications database must reside in the library specified in the **Library** field and must be of type SASAPPL. The default applications database is SASUSER.SASAPPL.

- 4 In the **Name** field, type the name of the application.
- 5 Select the type of application from the list shown in the window.
- 6 To bypass SAS/ASSIST software, select **Do not enter SAS/ASSIST**.
- 7 Select **OK** to return to the WorkPlace menu window.

The next time you invoke SAS/ASSIST software, your logon exit application is initiated first. When you exit the logon exit application, the WorkPlace menu appears.

You also can invoke a logon exit with the LOGON= command-line option. The syntax of this command is

```
ASSIST LOGON='libref.applds.applname.appltype'
```

The *libref.applds.applname.appltype* argument specifies a four-level name for the application. The default application database is SASUSER.SASAPPL. The LOGON= command-line option overrides **Logon exit**.

To disable the **Do not enter SAS/ASSIST** selection, bypass your logon exit application, and access SAS/ASSIST software, type **ASSIST LOGON=NO** on a command line or command window and press ENTER.

Specifying a Logoff Application

- 1 To open the Set Logoff Application window, follow this selection path:



The Set Logoff Application window is similar to the Set Logon Application window, except that there is no **Do not enter SAS/ASSIST** option. Instead, there is an **Exit the SAS System** option.

- 2 Enter information in the window using the guidelines given previously for the Set Logon Application window. If desired, select **Exit the SAS System** to specify that you want to end your SAS session when you exit SAS/ASSIST software.
- 3 Select **OK** to return to the WorkPlace menu.

When you exit SAS/ASSIST software, your logoff exit application is initiated. When you exit the logoff exit application, you return to the point from which you invoked SAS/ASSIST software, or exit the SAS system, depending on your selection for the **Exit the SAS System** option.

You can also initiate a logoff exit with the LOGOFF= command-line option. The syntax for this command is

```
ASSIST LOGOFF='libref.applds.applname.appltype'
```

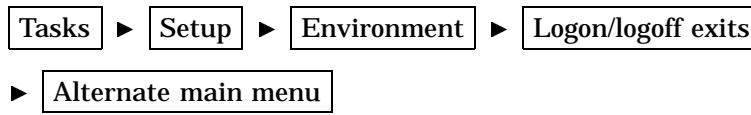
The *libref.applds.applname.appltype* argument specifies a four-level name of the application. The default application database is SASUSER.SASAPPL.

To disable the **Exit the SAS System** selection and bypass your logoff exit application, type **ASSIST LOGON=NO** on a command line or command window and press ENTER.

The LOGOFF= command line option overrides **Logoff exit**.

Specifying an Alternate Main Menu

- 1 To open the Set Alternate Main Menu window, follow this selection path:



The **Set Alternate Main Menu** window is similar to the Set Logon Application window.

- 2 Enter information in the window using the guidelines given previously for the Set Logon Application window.
- 3 If desired, deselect **Do not enter SAS/ASSIST** to enter SAS/ASSIST software when you exit the alternate main menu. This item, which is selected by default, enables you to bypass SAS/ASSIST software.
- 4 Select **OK** to return to the WorkPlace menu.

The next time you access SAS/ASSIST software or return to the WorkPlace menu from a task window, your alternate menu appears instead. When you exit the alternate main menu, the SAS/ASSIST WorkPlace menu appears (if you have deselected **Do not enter SAS/ASSIST**).

If you have specified an alternate main menu application, and you want to disable the alternate main menu feature, access SAS/ASSIST software by typing **ASSIST PRIMARY=NO** on a command line or command window. This bypasses the specified alternate main menu application and displays the WorkPlace menu.

You can also invoke an alternate main menu with the **PRIMARY=** command line option. The syntax for this command is

ASSIST PRIMARY='libref.applds.applname.appltype'

The *libref.applds.applname.appltype* argument specifies a four-level name for the application. The default application database is SASUSER.SASAPPL.

The **PRIMARY=** command-line option overrides **Alternate main menu**.

The correct bibliographic citation for this manual is as follows: SAS Institute Inc., *Doing More With SAS/ASSIST Software, Version 8*, Cary, NC: SAS Institute Inc., 1999. pp. 282.

Doing More With SAS/ASSIST Software, Version 8

Copyright © 1999 by SAS Institute Inc., Cary, NC, USA.

ISBN 1-58025-520-5

All rights reserved. Printed in the United States of America. No part of this publication may be reproduced, stored in a retrieval system, or transmitted, in any form or by any means, electronic, mechanical, photocopying, or otherwise, without the prior written permission of the publisher, SAS Institute Inc.

U.S. Government Restricted Rights Notice. Use, duplication, or disclosure of the software by the government is subject to restrictions as set forth in FAR 52.227-19 Commercial Computer Software-Restricted Rights (June 1987).

SAS Institute Inc., SAS Campus Drive, Cary, North Carolina 27513.

1st printing, October 1999

SAS® and all other SAS Institute Inc. product or service names are registered trademarks or trademarks of SAS Institute Inc. in the USA and other countries.® indicates USA registration.

Other brand and product names are registered trademarks or trademarks of their respective companies.

The Institute is a private company devoted to the support and further development of its software and related services.