

CHAPTER

5

Advanced EIS Applications Development

Overview of Advanced EIS Applications Development 43

Metabase Tuning 43

Class and Method Overrides 44

Overview of Advanced EIS Applications Development

This chapter briefly introduces methods by which you can further customize EIS multidimensional applications. To implement most of the suggested techniques, you should have an advanced knowledge of the SAS/EIS and SAS/AF development environments.

SAS/EIS software includes the following pre-built applications that use the EIS multidimensional data model:

- Application Screen Builder (Dimension Navigators and CSFs)
- 3D Business Graphs
- Bubble Chart
- Map
- Multidimensional Business Trends
- Multidimensional Chart
- Multidimensional Pie Chart
- Multidimensional Report
- Organizational Chart

If you implement the suggestions that are described in the following sections, the results will affect any applications that you build that use the multidimensional data model (and that are included in the preceding list).

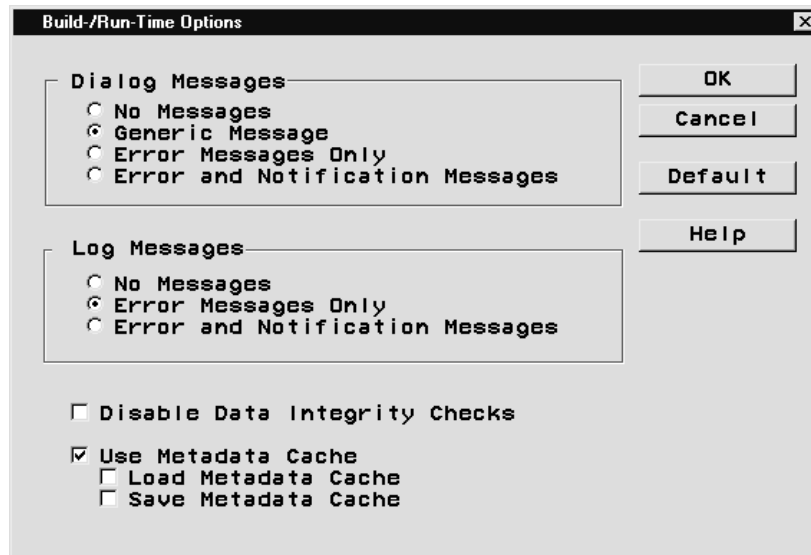
Metabase Tuning

During application build- and run-time, information is frequently requested from the metabase. As applications are invoked, many elements of the application are cross-checked against the metabase registration to make sure that they still exist.

For applications that are built and tested and then moved into a production environment, application and data integrity is typically given by the controlled environment in which the applications run. A developer might decide to do without the cross-checks, and also to rely on cached metabase information, thus improving application performance by avoiding most metabase queries.

You can control these parameters by following these steps:

- 1 Invoke EIS and select **Setup** in the EIS Main Menu. In the SAS/EIS Setup window, select **Build-/Run-time Options**.

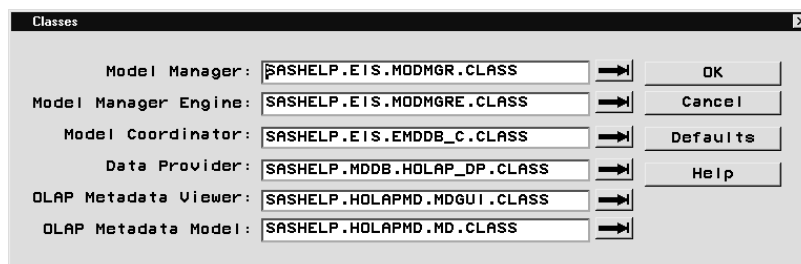


- 2 Select the **Disable Data Integrity Checks** check box to switch off the crosschecks at application invocation time.
- 3 Select the **Use Metadata Cache** to ensure that any access to metadata information is stored in a temporary list in memory and any subsequent access to the same data is retrieved from this list.
- 4 Select **Save Metadata Cache** to ensure that the temporary list is stored permanently in the catalog entry SASUSER.PARMS.MDCACHE.SLIST when the EIS session is closed.
- 5 Select **Load Metadata Cache** to ensure that when the SAS/EIS session starts the temporary list is initialized with the contents of the catalog entry SASUSER.PARMS.MDCACHE.SLIST.

Class and Method Overrides

You might want to change the behavior of parts of the SAS/EIS multidimensional data model or of the multidimensional data provider. You can do so by subclassing the classes in question and specifying the name of the new classes in the Classes dialog box.

To access the Classes window, start SAS/EIS, select **Setup**, and then select **Classes** in the Multidimensional Applications section.



You can change the behavior of individual applications by changing classes or overriding methods from within a particular application. Select **Advanced** in the application's Build window. In the **General** tab, specify overridden classes for the viewer and data model. In the **Methods** tab, select any of the given Viewer or Model methods and specify a location for the override code.

The correct bibliographic citation for this manual is as follows: SAS Institute Inc., *SAS/EIS[®] Software: Administrator's Guide, Version 8*, Cary, NC: SAS Institute Inc., 1999.

SAS/EIS[®] Software: Administrator's Guide, Version 8

Copyright © 1999 SAS Institute Inc., Cary, NC, USA.

ISBN 1-58025-506-X

All rights reserved. Printed in the United States of America. No part of this publication may be reproduced, stored in a retrieval system, or transmitted, by any form or by any means, electronic, mechanical, photocopying, or otherwise, without the prior written permission of the publisher, SAS Institute, Inc.

U.S. Government Restricted Rights Notice. Use, duplication, or disclosure of the software by the government is subject to restrictions as set forth in FAR 52.227-19 Commercial Computer Software-Restricted Rights (June 1987).

SAS Institute Inc., SAS Campus Drive, Cary, North Carolina 27513.

1st printing, October 1999

SAS[®] and all other SAS Institute Inc. product or service names are registered trademarks or trademarks of SAS Institute Inc. in the USA and other countries. [®] indicates USA registration.

IBM, ACF/VTAM, AIX, APPN, MVS/ESA, OS/2, OS/390, VM/ESA, and VTAM are registered trademarks or trademarks of International Business Machines Corporation. [®] indicates USA registration.

Other brand and product names are registered trademarks or trademarks of their respective companies.

The Institute is a private company devoted to the support and further development of its software and related services.