

CHAPTER

10

Saving Source Code for Editing and Re-execution

<i>Chapter Overview</i>	107
<i>Working With Source Code</i>	107
<i>Creating Source Code</i>	107
<i>Viewing Source Code</i>	108
<i>Saving Source Code</i>	109
<i>Editing and Re-executing Source Code</i>	110
<i>Exiting This Task</i>	112

Chapter Overview

When you perform a task with SAS/ASSIST software, you generate SAS program code that is executed in the background. You can save this code, called *source code* in this book, for editing and re-execution.

By viewing, editing, and re-executing the source code, new users receive an introduction to the SAS programming language. Saving source code is also useful for experienced users who want to use the programs that SAS/ASSIST software creates as a basis for customized applications.

This chapter shows you how to save and access the source code from a listing report.

Working With Source Code

Creating Source Code

The following steps instruct you to generate a listing report and then save the programming statements that are generated for that listing report. For more detailed instructions on how to produce a listing report, refer to Chapter 3, “Report Writing,” on page 29.

- 1 Follow this selection path:

Tasks ► Report Writing ► Listing...

The List a Table window appears.

- 2 If the active table is SASUSER.HOUSES, continue to the next step. Otherwise, select **Table**, and then select the SASUSER.HOUSES table. For more information on selecting tables, see “Selecting a Table” on page 24.

- 3 If there is an active Subset Data selection (indicated by **BY**, **WHERE**, or **ROWS** next to the **Subset data** button), follow the directions in “Clearing a Subset Data Selection” on page 26.
- 4 If other report selections exist (for example, column names are listed for **Columns**), follow this selection path to clear these selections:

File ► **New**

Select **no** in the Save Changes dialog box.

- 5 To run the report, follow this selection path:

Run ► **Submit**

The Listing Report appears in the Output window. Note that it is not necessary to run a task before saving it.

- 6 Return to the List a Table window by using one of the following methods, depending on your operating environment:
 - Use the PREVWIND function key.
 - Click on the SAS/ASSIST window.

Viewing Source Code

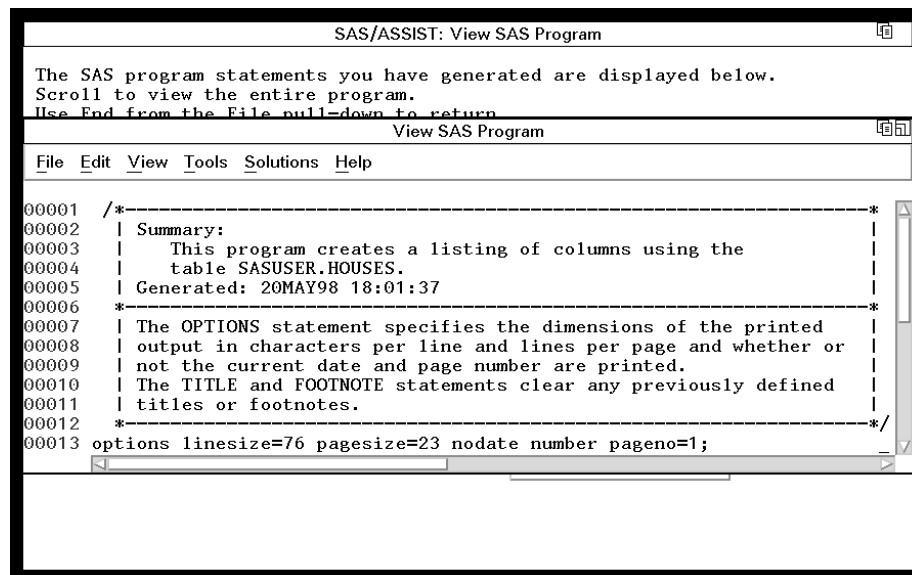
The steps in this section enable you to look at the program that was created by SAS/ASSIST software when you produced the listing report.

- 1 Follow this selection path from the List a Table window:

View ► **View source**

The program that was created when you produced the listing report appears.

Display 10.1 Program for Creating Listing Report



The screenshot shows a window titled "SAS/ASSIST: View SAS Program". The window contains the following text:

```

The SAS program statements you have generated are displayed below.
Scroll to view the entire program.
Use End from the File pull-down to return.
View SAS Program
File Edit View Tools Solutions Help
00001 /*-----*
00002 | Summary:
00003 | This program creates a listing of columns using the
00004 | table SASUSER.HOUSES.
00005 | Generated: 20MAY98 18:01:37
00006 *-----*
00007 | The OPTIONS statement specifies the dimensions of the printed
00008 | output in characters per line and lines per page and whether or
00009 | not the current date and page number are printed.
00010 | The TITLE and FOOTNOTE statements clear any previously defined
00011 | titles or footnotes.
00012 *-----*/
00013 options linesize=76 pagesize=23 nodate number pageno=1;

```

- 2 Use the scroll bars or the FORWARD, BACKWARD, LEFT, and RIGHT function keys to view the program.
- 3 When you finish looking at the program, follow this selection path to return to the List a Table window:

►

Saving Source Code

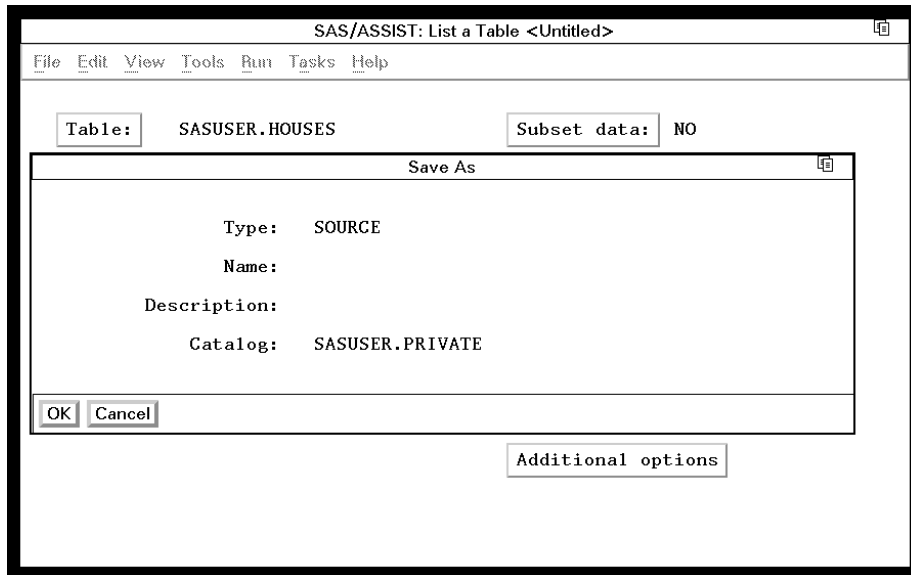
The steps in this section enable you to save the program that produced the listing report so that you can edit it or re-execute it at a later time.

- 1 Follow this selection path from the List a Table window:

►

The Save As window appears.

Display 10.2 Save As Window



- 2 In the **Name** field, type the name you want to call the program. For this example, type **HOUSERPT** as the program name.
A program name can be one to eight characters in length. It must start with a letter (A through Z) or an underscore (_), but it can otherwise contain any combination of letters, numbers, and underscores.
- 3 In the **Description** field, type a description of the program. The Description can be up to 32 characters in length and contain any combination of letters, numbers, and other characters. For this example, type **Listing of the Houses Table**.
- 4 The default catalog for saved source code is called SASUSER.PRIVATE, as shown in the previous display. If you want to save the source code in a different catalog, type the catalog name in the **Catalog** field. For a list of available catalogs, type a ? in the **Catalog** field and press ENTER to display a list of available catalogs. You can select one from this list.
- 5 Select **OK** to return to the List a Table window. A note appears in the message area to indicate that the program has been successfully saved.

Editing and Re-executing Source Code

You can use the Result Manager to edit and re-execute the program you saved in the previous section. For more information on the Result Manager, see Chapter 6, “Using the Result Manager,” on page 69.

- 1 Follow this selection path to invoke the Result Manager:

Tools ► Result Manager

Select **no** in the Save Changes dialog box. The Result Manager window appears with a list of your saved tasks, output, and programs.

- 2 Position the cursor in the space to the left of **HOUSERPT**. Type **E** (or **S**) and press ENTER. The Edit window appears with your program.

Display 10.3 Edit Window

```

Edit: HOUSERPT.SOURCE
File Edit View Tools Solutions Help
00001 /*-----*
00002 | Summary:
00003 | This program creates a listing of columns using the
00004 | table SASUSER.HOUSES.
00005 | Generated: 20MAY98 18:03:28
00006 *-----*
00007 | The OPTIONS statement specifies the dimensions of the printed
00008 | output in characters per line and lines per page and whether or
00009 | not the current date and page number are printed.
00010 | The TITLE and FOOTNOTE statements clear any previously defined
00011 | titles or footnotes.
00012 *-----*/
00013 options linesize=76 pagesize=23 nodate number page=1;
00014 title;
00015 footnote;
00016 proc print data=SASUSER.HOUSES
00017 noobs label
00018 ;
00019 run;
00020
00021
00022
00023
00024
00025
00026

```

- 3 Position the cursor over the semicolon (;) in the line with the **footnote** statement. Add a footnote by pressing the SPACE BAR, and then typing

```
SASUSER.HOUSES.DATA;
```

as shown in the following display.

Display 10.4 Modified Source Code

```

00001 /*-----*
00002 | Summary: |
00003 | This program creates a listing of columns using the |
00004 | table SASUSER.HOUSES. |
00005 | Generated: 20MAY98 18:03:28 |
00006 *-----*
00007 | The OPTIONS statement specifies the dimensions of the printed |
00008 | output in characters per line and lines per page and whether or |
00009 | not the current date and page number are printed. |
00010 | The TITLE and FOOTNOTE statements clear any previously defined |
00011 | titles or footnotes. |
00012 *-----*/
00013 options linesize=76 pagesize=23 nodate number pageno=1;
00014 title;
00015 footnote SASUSER.HOUSES.DATA;
00016 proc print data=SASUSER.HOUSES
00017     noobs label
00018     ;
00019 run;
00020
00021
00022
00023
00024
00025
00026
    
```

- 4 Follow this selection path to save the edited program and return to the Result Manager window:



A prompt appears asking if you want to save the changes to the program. Select **Yes**.

- 5 In the selection field next to **HOUSERPT**, type **X** and press ENTER to re-execute the program and view the footnote you added.

Display 10.5 Modified Listing Report Output

Style of homes	Square footage	Number of bedrooms	Number of bathrooms	Street address	Asking price
RANCH	1250	2	1.0	Sheppard Avenue	\$64,000
SPLIT	1190	1	1.0	Rand Street	\$65,850
CONDO	1400	2	1.5	Market Street	\$80,050
TWOSTORY	1810	4	3.0	Garris Street	\$107,250
RANCH	1500	3	3.0	Kemble Avenue	\$86,650
SPLIT	1615	4	3.0	West Drive	\$94,450
SPLIT	1305	3	1.5	Graham Avenue	\$73,650
CONDO	1390	3	2.5	Hampshire Avenue	\$79,350
TWOSTORY	1040	2	1.0	Sanders Road	\$55,850
CONDO	2105	4	2.5	Jeans Avenue	\$127,150
RANCH	1535	3	3.0	State Highway	\$89,100
TWOSTORY	1240	2	1.0	Fairbanks Circle	\$69,250
RANCH	720	1	1.0	Nicholson Drive	\$34,550
TWOSTORY	1745	4	2.5	Highland Road	\$102,950
CONDO	1860	2	2.0	Arcata Avenue	\$110,700

SASUSER.HOUSES.DATA

- 6 To return to the Result Manager window from the Output window, use one of the following methods, depending on your operating environment:
 - Use the PREVWIND function key.
 - Click on the SAS/ASSIST window.
- 7 To return to the List a Table window, follow this selection path from the Results window:

File ► End

The List a Table window reappears.

Exiting This Task

When you are ready to return to the WorkPlace menu or move on to another task, follow the directions in “Exiting a Task” on page 26.

The correct bibliographic citation for this manual is as follows: SAS Institute Inc., *Getting Started with the SAS System Using SAS/ASSIST Software, Version 8*, Cary, NC: SAS Institute Inc., 1999. pp. 196

Getting Started with the SAS System Using SAS/ASSIST Software, Version 8

Copyright © 1999 by SAS Institute Inc., Cary, NC, USA.

ISBN 1-58025-460-8

All rights reserved. Printed in the United States of America. No part of this publication may be reproduced, stored in a retrieval system, or transmitted, in any form or by any means, electronic, mechanical, photocopying, or otherwise, without the prior written permission of the publisher, SAS Institute Inc.

U.S. Government Restricted Rights Notice. Use, duplication, or disclosure of the software by the government is subject to restrictions as set forth in FAR 52.227-19 Commercial Computer Software-Restricted Rights (June 1987).

SAS Institute Inc., SAS Campus Drive, Cary, North Carolina 27513.

1st printing, October 1999

SAS[®] and all other SAS Institute Inc. product or service names are registered trademarks or trademarks of SAS Institute Inc. in the USA and other countries. [®] indicates USA registration.

The Institute is a private company devoted to the support and further development of its software and related services

DB2[®] and OS2[®] are registered trademarks or trademarks of International Business Machines Corporation. [®] indicates USA registration.

Other brand and product names are registered trademarks or trademarks of their respective companies.