

Appendix D

Special Fonts in SAS/QC Software

Appendix Table of Contents

INTRODUCTION	1867
FONT SELECTION	1867

Appendix D

Special Fonts in SAS/QC Software

Introduction

Four special graphics fonts named QCFONT1, QCFONT2, QCFONT3, and QCFONT4 are provided with SAS/QC software. You can use these fonts to display symbols such as \bar{X} , which are commonly encountered in statistical quality improvement applications, in the titles and footnotes of displays created with high-resolution graphics devices.

Font Selection

Each of the special fonts matches a particular SAS/GRAPH font, as indicated by the following table:

Special Font	Matching SAS/GRAPH Font
QCFONT1	SIMPLEX
QCFONT2	DUPLEX
QCFONT3	SWISSE
QCFONT4	SWISS

Choose the special font corresponding to the SAS/GRAPH font in the table that most closely matches the font you are using for general text.

See page 1712 for an example in which QCFONT4 is used to create a title for a control chart.

The following figures illustrate the four special fonts. In each of the figures, the symbols are shown in the special font, and the title and the character codes are shown in the matching SAS/GRAPH font.

QCFONT1 Font with Character Codes

o	<	=	\bar{C}	\tilde{M}	\bar{M}	\overline{NP}	\bar{P}	\bar{R}	\bar{S}	\bar{U}	\tilde{X}
0	<	=	C	L	M	N	P	R	S	U	V
\tilde{X}	\bar{X}	\tilde{X}	\bar{X}	α	β	δ	∇	Δ	μ	\leq	σ
W	X	Y	Z	a	b	d	k	l	m	q	s

Figure D.1. QCFONT1 and SIMPLEX Fonts

QCFONT2 Font with Character Codes

o	<	=	\bar{C}	\tilde{M}	\bar{M}	\overline{NP}	\bar{P}	\bar{R}	\bar{S}	\bar{U}	\tilde{X}
0	<	=	C	L	M	N	P	R	S	U	V
\tilde{X}	\bar{X}	\tilde{X}	\bar{X}	α	β	δ	∇	Δ	μ	\leq	σ
W	X	Y	Z	a	b	d	k	l	m	q	s

Figure D.2. QCFONT2 and DUPLEX Fonts

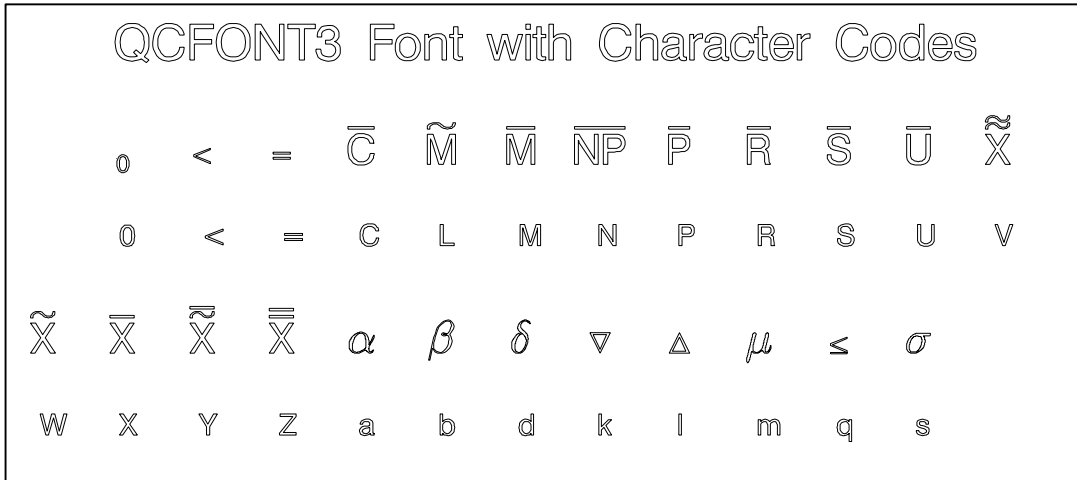


Figure D.3. QCFONT3 and SWISSE Fonts

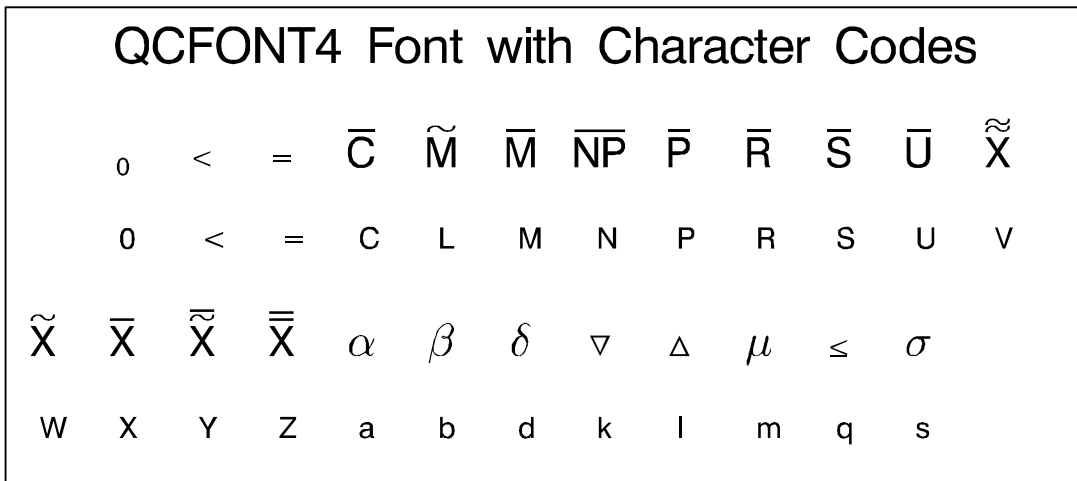


Figure D.4. QCFONT4 and SWISS Fonts

The correct bibliographic citation for this manual is as follows: SAS Institute Inc., *SAS/QC[®] User's Guide, Version 8*, Cary, NC: SAS Institute Inc., 1999. 1994 pp.

SAS/QC[®] User's Guide, Version 8

Copyright © 1999 SAS Institute Inc., Cary, NC, USA.

ISBN 1-58025-493-4

All rights reserved. Printed in the United States of America. No part of this publication may be reproduced, stored in a retrieval system, or transmitted, by any form or by any means, electronic, mechanical, photocopying, or otherwise, without the prior written permission of the publisher, SAS Institute Inc.

U.S. Government Restricted Rights Notice. Use, duplication, or disclosure of the software by the government is subject to restrictions as set forth in FAR 52.227-19 Commercial Computer Software-Restricted Rights (June 1987).

SAS Institute Inc., SAS Campus Drive, Cary, North Carolina 27513.

1st printing, October 1999

SAS[®] and all other SAS Institute Inc. product or service names are registered trademarks or trademarks of SAS Institute in the USA and other countries. [®] indicates USA registration.

IBM[®], ACF/VTAM[®], AIX[®], APPN[®], MVS/ESA[®], OS/2[®], OS/390[®], VM/ESA[®], and VTAM[®] are registered trademarks or trademarks of International Business Machines Corporation. [®] indicates USA registration.

Other brand and product names are registered trademarks or trademarks of their respective companies.

The Institute is a private company devoted to the support and further development of its software and related services.